

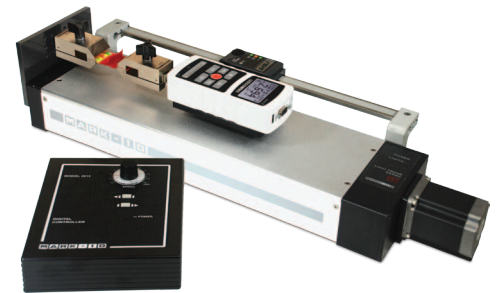
32-1054 REV 5

The ESMH is a 50 lbf (250 N) capacity horizontal test stand designed for tension, compression, and friction testing. A smooth top surface makes this tester particularly well suited for coefficient of friction testing. Other typical applications include the testing of sealed pouches, fabrics, tubing, sutures, and many other items in virtually every industry.

The tester features integrated limit switches for repetitive testing or other tests where travel limits are required. Modular design accommodates a wide variety of test sample shapes and sizes. The ESMH uses a remote control unit, distancing the operator from the test for added safety and convenience. Use this test stand with a Mark-10 force gauge and grips to create a complete testing solution.

Specifications

Load Capacity:	50 lbf [250 N]
Maximum Travel:	≈13 in [330 mm], depending on gauge, gripping fixtures, and sample size
Speed range:	0.2 - 50 in/min [5 - 1270 mm/min]
Speed setting accuracy:	±5%, ±0% variation with load
Weight:	Test stand: 15.75 lb [7.7 kg] Control unit: 10.25 lb [1.2 kg]
Power:	Universal input 80-240 VAC, 50/60 Hz
Included accessories:	Extension rod, small hook, medium hook, #10-32 coupler, compression plate, force gauge mounting hardware, tool kit
Warranty:	3 years (see individual statement for further details)



Optional Equipment

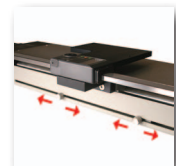
Digital travel display ESMH001	6 in [150 mm] travel, 0.0005 in [0.01 mm] resolution, 0.001 in [0.03 mm] accuracy, SPC output for data collection.
Overload / Set Point Cable 09-1180	Stops test stand travel at programmable high and low set points for tension and compression forces. Also protects the force gauge against accidental overloads during motorized tests. Compatible with Series 7, 5 and 4 force gauges. Can be used simultaneously with the USB data output cable supplied with the gauge.

The ESMH is shown in a peel testing application, with Series 5 digital force gauge, digital travel display, and film & paper grips

» Digital travel display

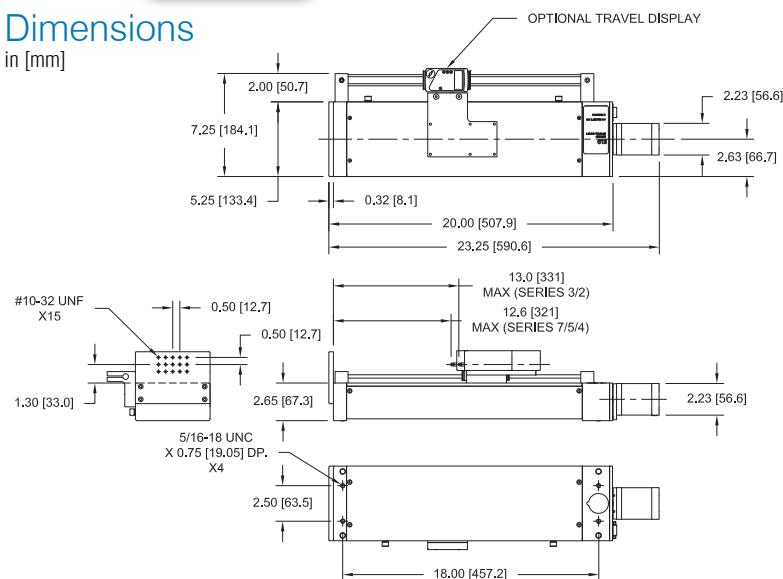


» Adjustable limit switches



Dimensions

in [mm]



Ordering Information

Model No.	Description
ESMH	Motorized force measurement test stand, 110V
ESMHE	Motorized force measurement test stand, 220V, Euro Plug
ESMHU	Motorized force measurement test stand, 220V, UK Plug
ESMHA	Motorized force measurement test stand, 220V, Australian Plug
ESMH001	Digital travel display
09-1180	Overload protection / set point cable. Series 7/5/4 gauge to ESMH



Mark-10 Corporation ■ www.mark-10.com ■ info@mark-10.com
Toll-free: 888-MARK-TEN ■ Tel: 631-842-9200 ■ Fax: 631-842-9201



Specifications subject to change without prior notice